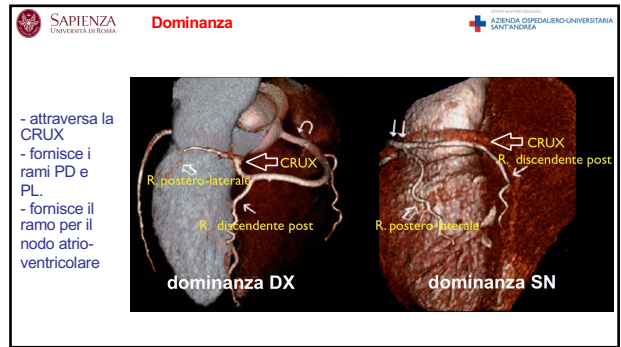
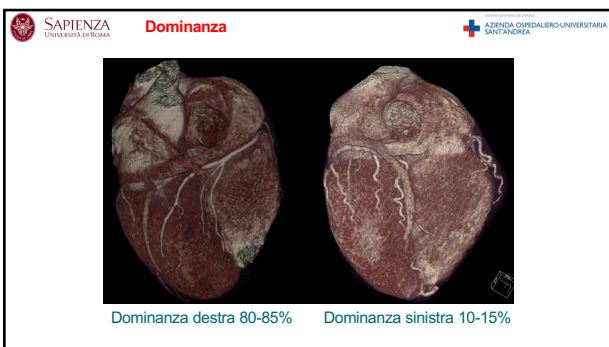


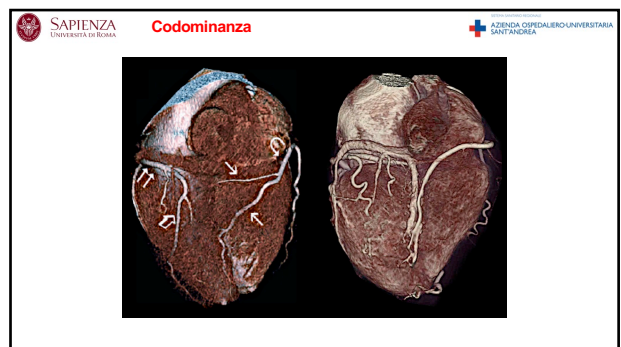
5



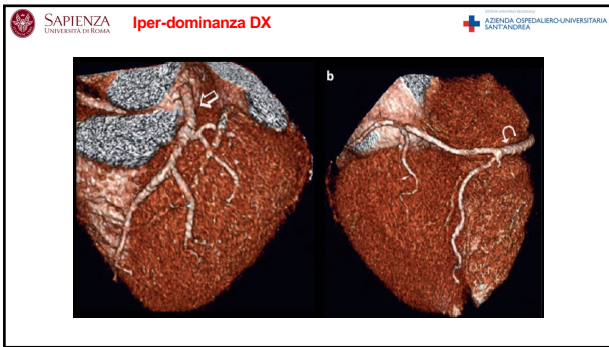
6



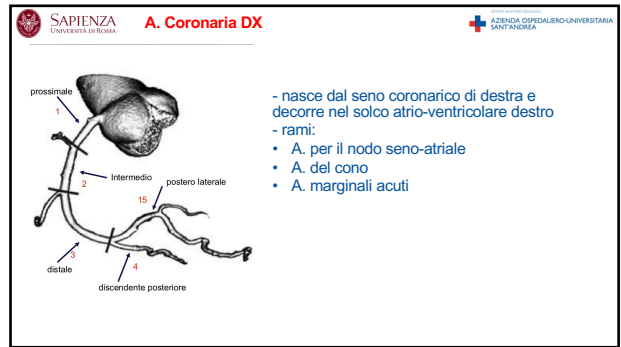
7



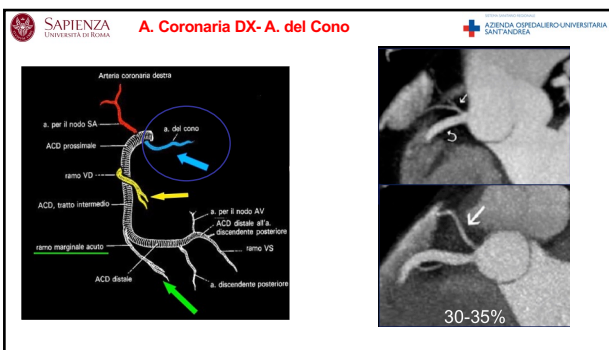
8



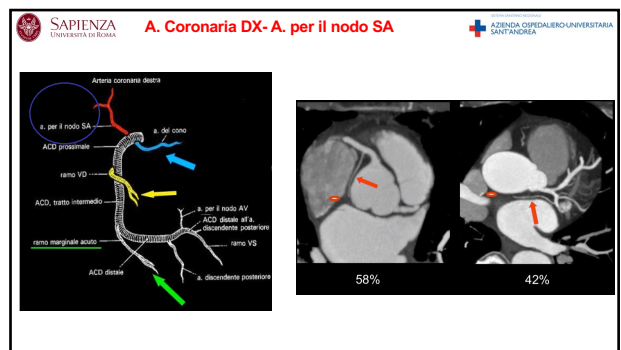
9



10



11



12

A. Coronaria sinistra: tronco comune

- nasce dal seno coronarico di sinistra, subito al di sotto della giunzione sino-tubulare.
- tra auricola sinistra e il tronco polmonare
- diametro: 3-6 mm; lunghezza: 0-20 mm.
- rami:
 - Arteria discendente anteriore
 - Arteria circonflessa
 - Ramo intermedio (15-30%)

13

A. Coronaria sinistra: DA

- decorre nel solco interventricolare anteriore fino all'apice del cuore
- rami:
 - Diagonali
 - Settali

14

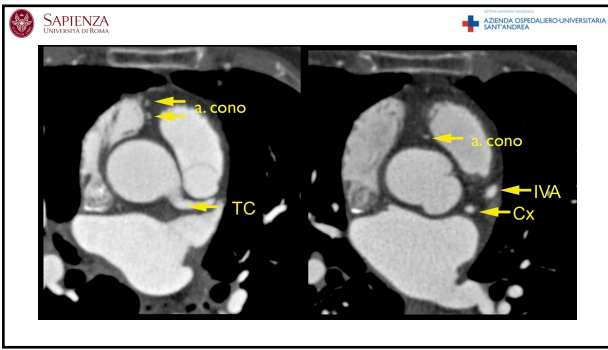
A. Coronaria sinistra: CX

- decorre inferiormente nel solco atrio-ventricolare.
- rami:
 - Marginali ottusi

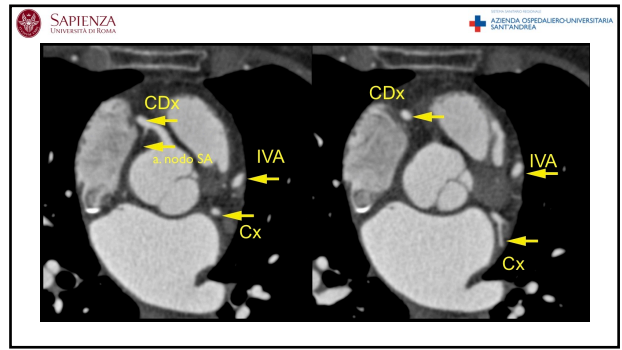
15

A. Coronaria sinistra: ramo intermedio

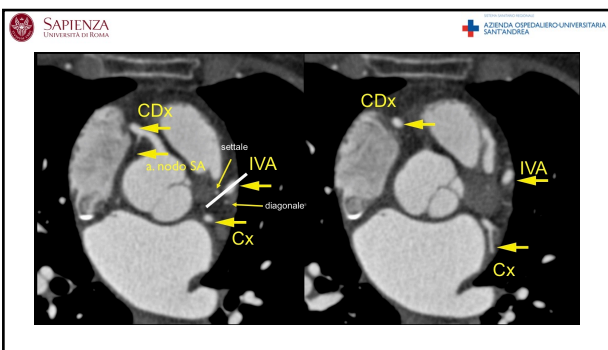
16



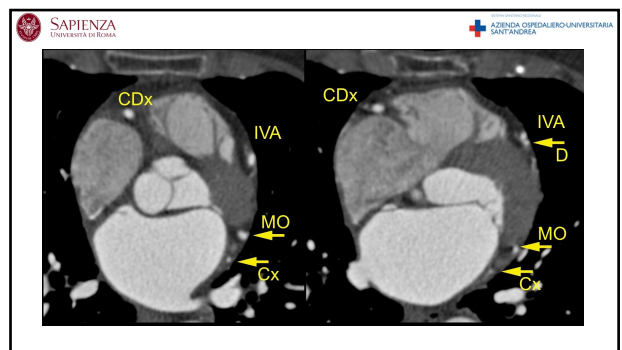
17



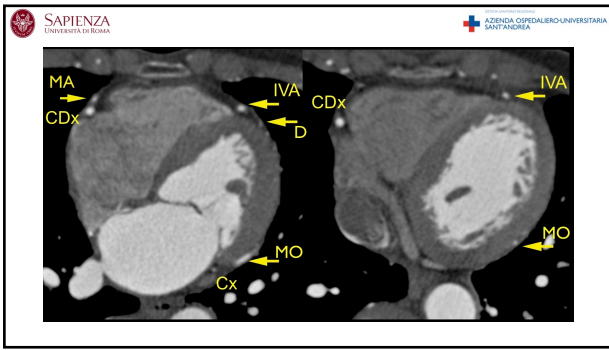
18



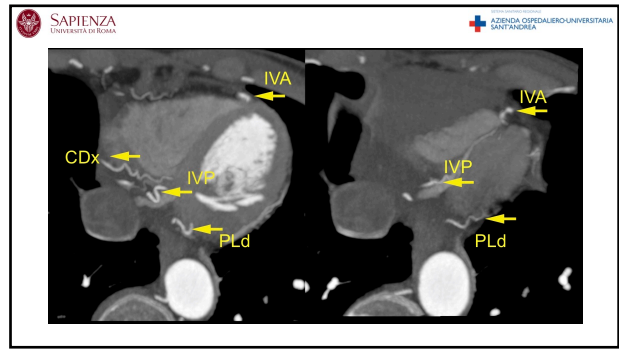
19



20



21



22

Anomalie coronariche

Coronary Artery Anomalies

Anomalies of origin

- High takeoff
- Multiple ostia
- Single coronary artery
- Anomalous origin of coronary artery from pulmonary artery*
- Origin of coronary artery or branch from opposite or noncoronary sinus and an anomalous (retroaortic, interarterial)* prepulmonic, septal (subpulmonic) course

Anomalies of course

- Myocardial bridging*
- Duplication of arteries

Anomalies of termination

- Coronary artery fistula*
- Coronary arcade
- Extracardiac termination

Source—Reference 13.
*Hemodynamically significant anomalies, which might be responsible for myocardial perfusion abnormalities.

coronary artery anomalies	
hemodynamically relevant	non-hemodynamically relevant
anomalies of origin	
anomalous origin of the LCA from the PA (SLCAB) (Wolff-White-Camino syndrome)	high takeoff (> 1 cm above the sinotubular junction)
anomalous origin of a CA from the noncoronary or aortic arch with interarterial course	origin outside the CS
	• ostial retroaortic vessel
	• ascending aorta (e.g., high takeoff)
	• left-right coronary
	• acute aortic descending aorta, branchless artery
	• subdiaphragmatic, external thoracic artery, coronary multi-branch (e.g., lack of LCA main branch)
	ACAB, acute aortic branch
	• transaortic
	• retroaortic/outpulmonic
	• retroperitoneal course
anomalies of course	myocardial bridge
	duplication
	crossing of coronary artery branches
anomalies of termination	coronary artery fistula (CAF)
	coronary arcade
	extracardiac systemic termination

ACAB, anomalous origin of a coronary artery from the opposite sinus; ACAB, anomalous origin of the left coronary artery from the right coronary artery; CA, coronary artery; CS, coronary sinus; LCA, left coronary artery; PA, pulmonary artery.

23

Anomalie di origine

Assenza di TC con origine indipendente di IVA e CX

24

Anomalie di origine

High take off
Origine di una o più coronarie > 10 mm dalla giunzione sino-tubulare

LM
22 mm
AoV

25

Anomalie di origine

Single Coronary Artery

- **GROUP I:** la coronaria single segue il decorso di un'arteria coronaria destra normale (RCA) o di un'arteria coronaria sinistra normale. Nel primo caso, la singola arteria coronaria decorre come RCA, LCX o come arteria coronaria discendente anteriore sinistra (LAD). Nel secondo caso, una singola arteria LM si divide in due rami (LAD e LCX) e la RCA ha origine come continuazione della LCX attraverso la CRUX.
- **GROUP II** la coronaria single risale dal seno destro o sinistro e attraversa il solco atrioventricolare per arrivare in prossimità dell'arteria coronaria controlaterale.
- **GROUP III:** la coronaria single presenta una segmentazione atipica con notevoli variazioni rispetto al tipico decorso delle tre arterie coronarie principali.

26

Anomalie di origine

A B C

Shitru, A., Kadakia, J., and Busloff, M. (2011). Single coronary artery syndrome: Cardiac computed tomography angiography as a leading imaging modality. Catheter. Cardiovasc. Intervent., 75, 764-769. <https://doi.org/10.1177/0885066611410444>

27

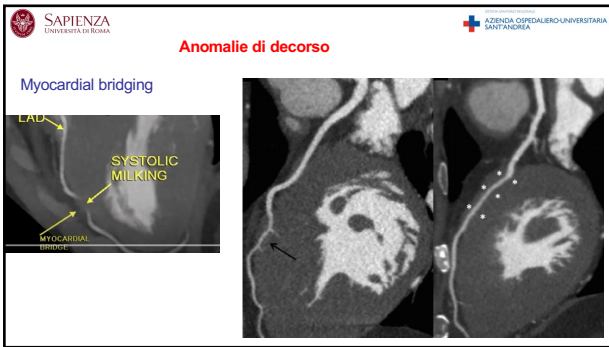
Anomalie di decorso

Myocardial bridging:

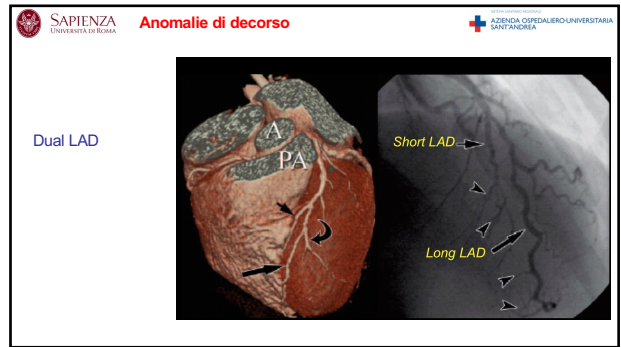
- Superficiale (entro 4 mm)
- Profondo (> 4 mm)

LAD LMCA
LV LCX

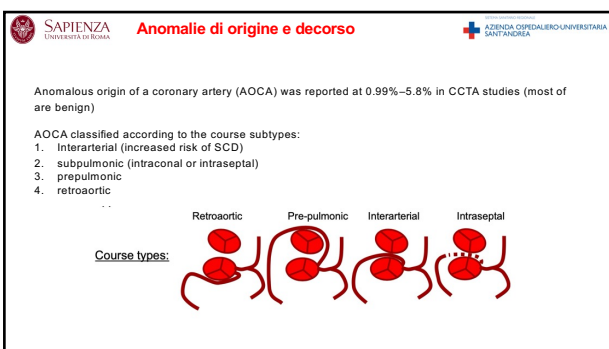
28



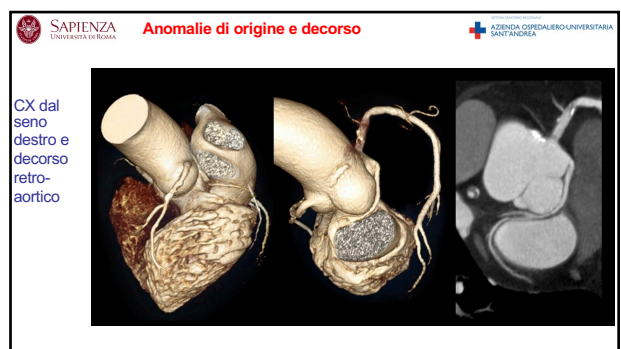
29



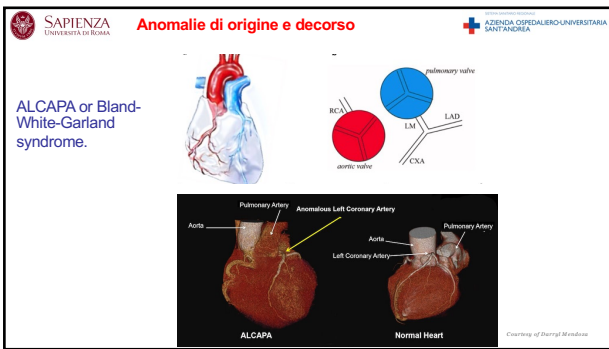
30



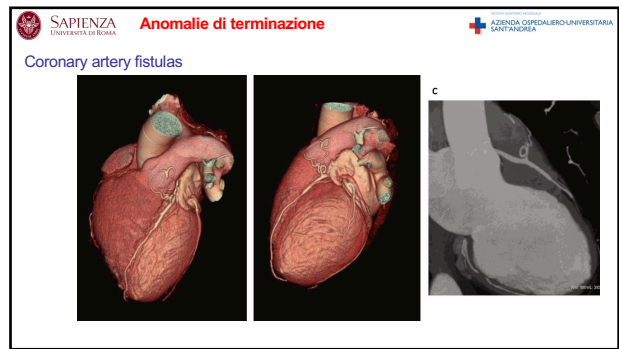
31



32



37



38



39